

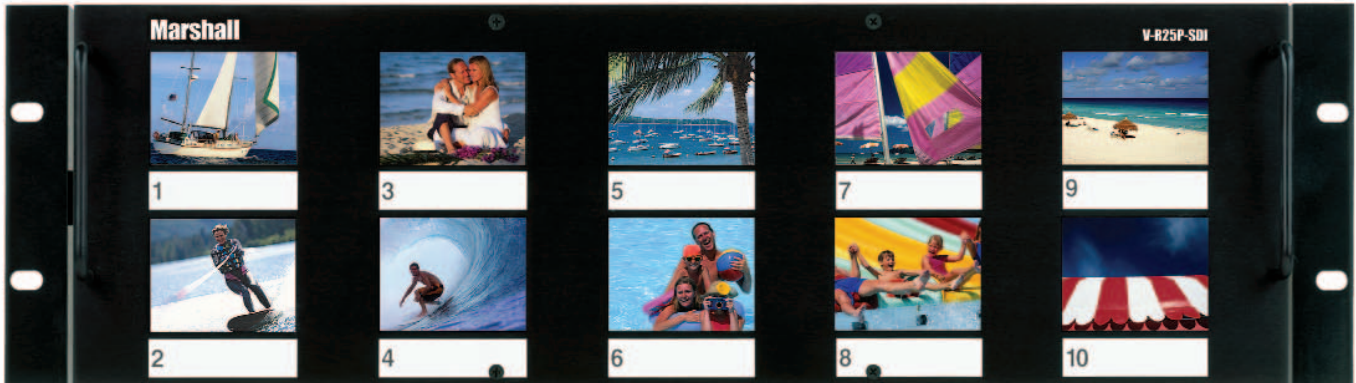
# Marshall

## V-R25P-SDI Instruction Sheet

Broadcast Multimedia Division

<http://www.LCD Racks.com> · e-mail: [sales@lcdracks.com](mailto:sales@lcdracks.com)

The **V-R25P-SDI** includes all hardware for your rack mount applications. This model features ten 2.5" TFT active matrix LCD displays and accepts SDI inputs (ITU-R601) with re-clocked loop through. Each display is a matrix of 480 x 234 dots and produces true high-resolution images. Like all Marshall rack mounted displays, the V-R25P-SDI can tilt up or down for optimum viewing angle and installs into a EIA standard 19" rack. Each display features automatic recognition of NTSC/PAL signals. NTSC and Pal signals may be interspersed on the ten screens. A blue screen will be displayed indicating signal loss. Tilting the unit down accesses the power on/off toggle switch located on the side of the unit. Power supply, manual and a dry erase marker for labeling are included.



**The operation of the V-R25P is fairly straightforward, however, it is important to take note of the following:**

1. The V-R25P-SDI has been designed to fit in a 3U space on your rack. It may be necessary to center the unit up or down in order to not touch any adjacent units in your rack when tilting unit up or down.
2. Each LCD Panel comes with a protective plastic film that must be removed by carefully lifting the film from the folded corner and peeling it off. Be certain not to apply any pressure on the LCD panels, they are fragile and can break. Scratched, cracked or broken LCD screens are not covered by our warranty.
3. The V-R25P-SDI uses 12VDC, 3.0amp regulated power. Be certain these specifications are met when using a power supply other than the one supplied to you by Marshall Electronics.
4. The left pin on the power connector for the V-R25P-SDI is the POSITIVE terminal and the right pin is NEGATIVE. Any battery operation of the V-R25P-SDI must have this polarity configuration.
5. The Video inputs on the rear of the panel are 75 Ohm self-terminated. The loop through outputs are not self terminating and travel through active components. The loop through feature is active as long as power is supplied to the unit. The unit does not have to be in the ON position to activate the loop through feature, however power must be supplied.

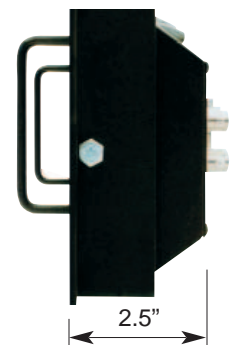
**Power Switch Location**



**Rear View**



**Side View**



Display	Viewing Area	Dot Pitch	Picture Elements	Inputs	Color Bars	Dimensions	Power Consumption
2.5" LCD Active Matrix	1.97" x 1.48" each panel	0.105mm x 0.161mm	480H x 234V	10 SDI Inputs	N/A	19.125W x 5.14H x 3.75D	12 VDC 3.0 Amps

# Marshall

## Warranty

Marshall Electronics warrants to the first consumer, that this V-R25P-SDI rackmount monitor will, under normal use, be free from defects in workmanship and materials, when received in its original container, for a period of one year from the purchase date.

This warranty is extended to the first consumer only and proof of purchase is necessary to honor the warranty. If there is no proof of purchase provided with a warranty claim, Marshall Electronics reserves the right, not to honor the warranty set forth above. Therefore, labor, shipping and parts may be charged to you.

This warranty does not apply to product exterior and cosmetics. Misuse, abnormal service or handling, improper alterations or modifications in design or construction, voids this warranty. No sales personnel of the seller, nor any other person is authorized to make any warranties other than those described above, or to extend the duration of any warranties on behalf of Marshall Electronics, beyond the time period described above.

Due to constant effort to improve products and product features, specifications may change without notice.