

VS-H60 Series

Weather Proof Housing for IP Cameras



User Manual



* Camera Not Included
* Shown with optional Wiper

VS-H60 Series Configuration Options

- **VS-H60** Basic Housing
- **VS-H60-S** With Sunshield
- **VS-H60-SH** With Sunshield and Heater
- **VS-H60-SHB** With Sunshield Heater and Blower
- **VS-H60-SHBD** With Sunshield Heater, Blower and Defroster
- **VS-H60-SHBDW** With Sunshield Heater, Blower, Defroster and Wiper
- **VS-H60-HSBDWP** With Sunshield Heater, Blower, Defroster, Wiper and PoE+

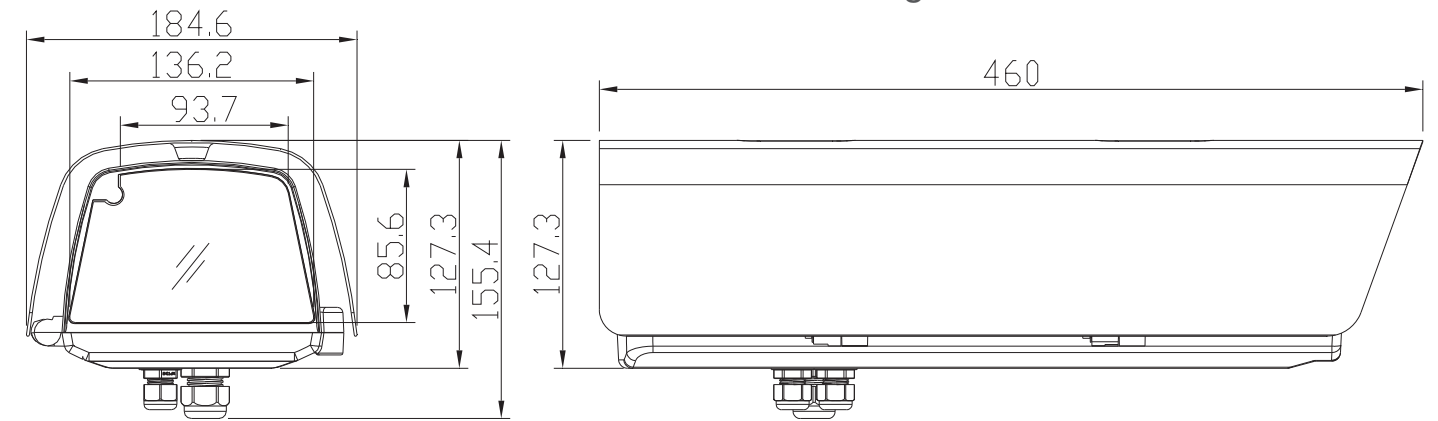
Available Options:

- **S - Sunshield**
- **H - Heater**
- **B - Blower**
- **D - Defroster**
- **W - Wiper**
- **P - PoE+**

VS-H60 Series Specs

Using Condition	Indoor / Outdoor		
Input Power	AC24V		
Power Consumption	VS-H60-SHB	24VAC:22W	
	VS-H60-SHBD	24VAC:30W	
	VS-H60-SHBDW	24VAC:35W	
Weather Resistant	VS-H60/VS-H60-S	Temperature: -15°~+50° / Humidity: 100%	
	VS-H60-SHB	Temperature: -35°~+55° / Humidity: 100%	
	VS-H60-SHBD	Temperature: -40°~+55° / Humidity: 100%	
Thermostat	Heater: ON 4°C±3°C Blower: ON 45°C±5°C		
Dimension		External Size	Internal Size
	VS-H60	173(W)x116(H)x428(D)m/m	132(W)x78.4(H)x383.8(D) m/m
	VS-H60-S	184.6(W)x127.3(H)x460(D)m/m	132(W)x78.4(H)x383.8(D) m/m
	VS-H60-SHB	184.6(W)x127.3(H)x460(D) m/m	132(W)x78.4(H)x294(D) m/m
	VS-H60-SHBD VS-H60-SHBDW		
Weight	VS-H60: 2.3kg, VS-H60-S: 3kg, VS-6H0-SHB / VS-H60-SHBDW: 3.6kg		
Material	Aluminum, Glass, Plastic		
IP grade	IP66		
Accessory	1/4-20UNC Screws (3ea). Spring Washer (1ea). Flat Washer (1ea)		

Technical Drawings

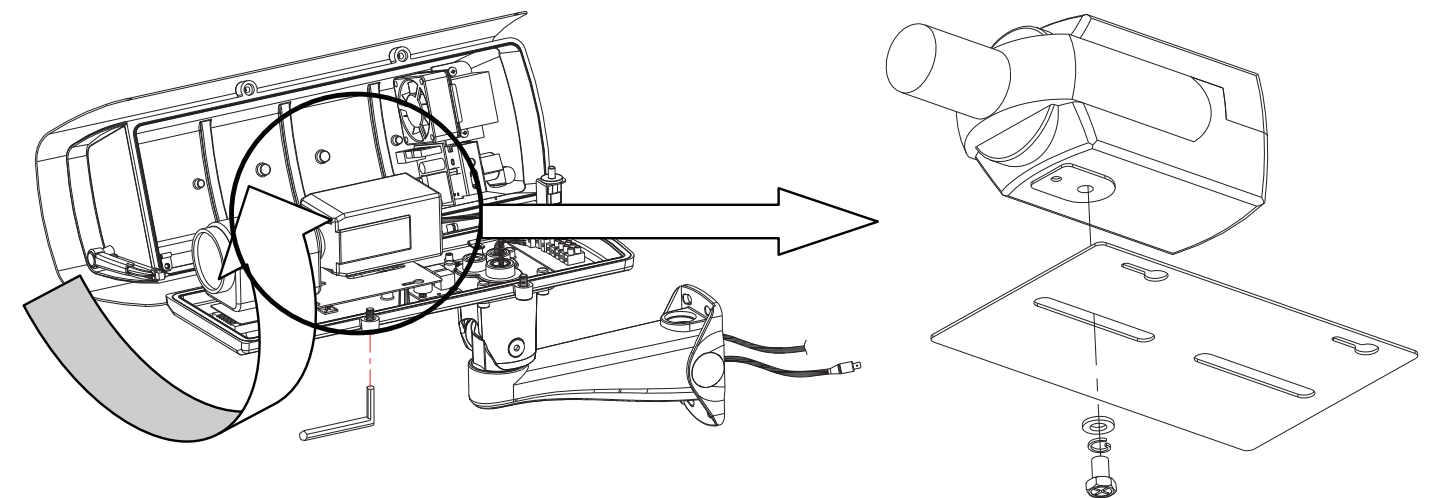


Important safety instructions

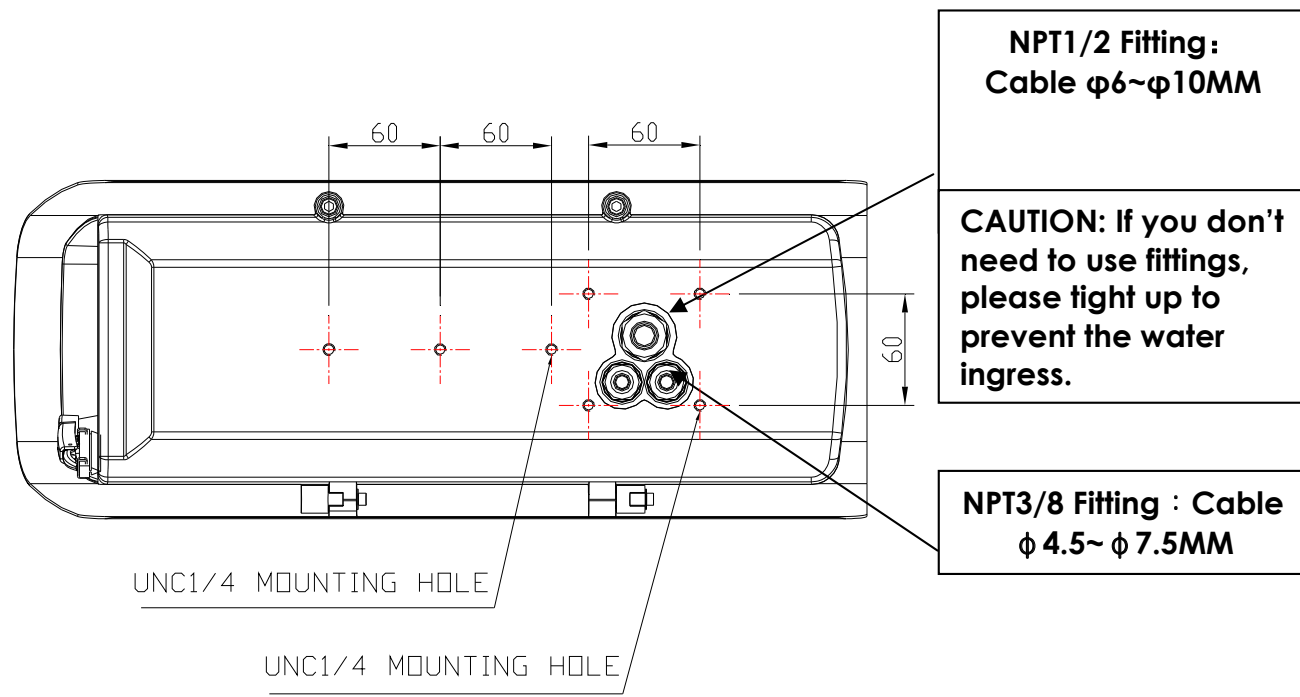
- 1. Safety check** - Safety checks should be performed upon completion of service or repairs to the unit to ensure proper operating condition.
- 2. Installation** - Install in accordance with the manufacturer's instructions and in accordance with applicable local codes.
- 3. Attachments, changes or modifications** - Only use attachments/accessories specified by the manufacturer. Any change or modification of the equipment, not expressly approved by Marshall, could void the warranty or, in the case of an authorization agreement, authority to operate the equipment.

Camera Installation

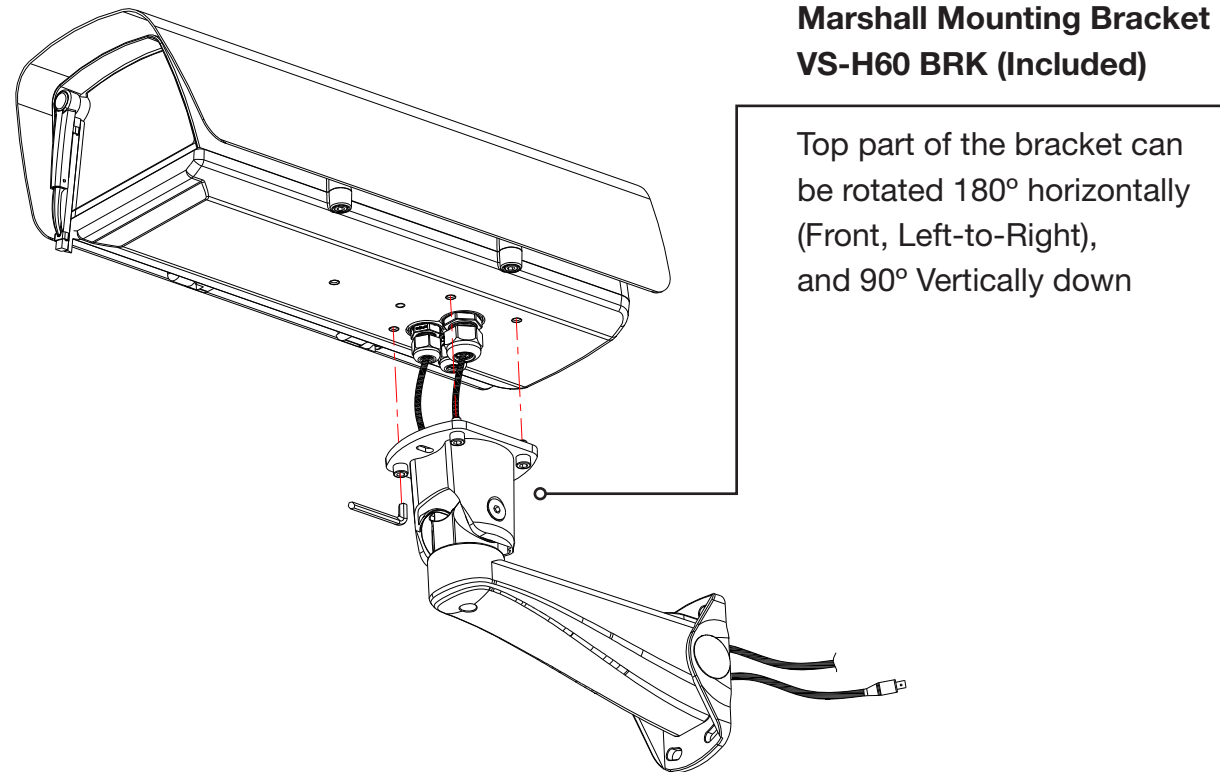
- Use 5MM wrench, open the housing top part
- Remove the camera plate, Install the camera on the camera plate and screw up
- Check the lens and focus
- Close the housing top part and screw up tightly



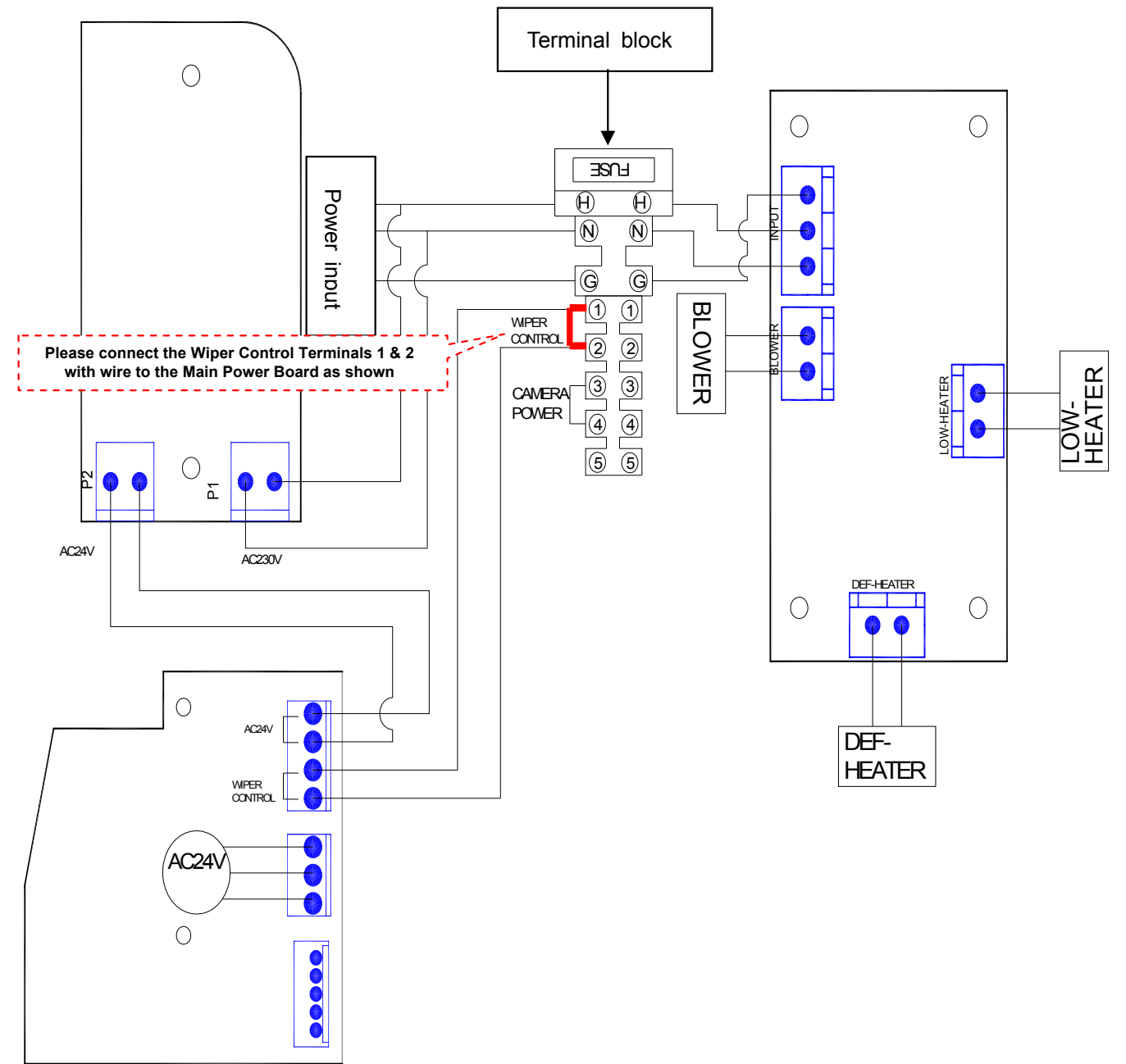
Wall Mount Bracket Installation



Supplied Bracket



Wire Connection



Warranty

Marshall Electronics warrants to the first consumer that this VS-H60, weather-proof housing will, under normal use, be free from defects in workmanship and materials, when received in its original container, for a period of one year from the purchase date. This warranty is extended to the first consumer only, and proof of purchase is necessary to honor the warranty. If there is no proof of purchase provided with a warranty claim, Marshall Electronics reserves the right not to honor the warranty set forth above. Therefore, labor and parts may be charged to the consumer. This warranty does not apply to the product exterior or cosmetics. Misuse, abnormal handling, alterations or modifications in design or construction void this warranty.

No sales personnel of the seller or any other person is authorized to make any warranties other than those described above, or to extend the duration of any warranties on behalf of Marshall Electronics, beyond the time period described above.

Due to constant effort to improve products and product features, specifications may change without notice.

Marshall Electronics, Inc.

1910 East Maple Ave. El Segundo, CA 90245

Tel: (800) 800-6608 / (310) 333-0606 • Fax: 310-333-0688

www.Marshall-usa.com • support@marshall-usa.com